



You may be eligible to participate in the SUNRISE trial if you:

- ☀ **Were diagnosed with type 1 diabetes (T1D) within the last 5 years.**
- ☀ **Are between 18 and 40 years old.**
- ☀ **Have a recent HbA1c of under 8.0%.**
- ☀ **Are on insulin therapy.**
- ☀ **Are willing to wear a Dexcom G6 CGM, provided by the study, during the entire 1-year treatment period.**

This trial is available at:

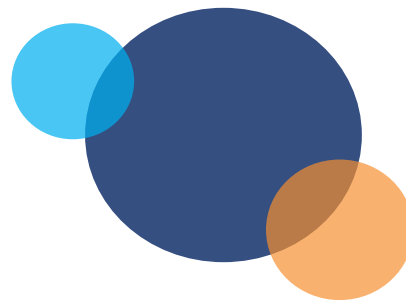


For more information or to schedule an appointment, please call our team at:

888-813-8669

Or email us at:

T1DTrials@joslin.harvard.edu



**Joslin Diabetes Center
One Joslin Place
Boston, MA
02215**

Approved by
JDC/CHS 



**DO YOU
HAVE TYPE 1
DIABETES?**



Tolerion SUNRISE Clinical Trial



What is the goal of this clinical trial?

The purpose of the SUNRISE trial is to evaluate whether we can use the study drug to safely preserve remaining insulin-producing beta cells and improve blood glucose control.



TOL-3021

The study drug, TOL-3021, is a DNA vaccine that, when injected into muscle, presents pieces of insulin to the immune system and may make the body more tolerant of insulin-producing beta cells.

The Approach

TOL-3021 is administered weekly for 52 weeks as intramuscular injections. After initial visits these injections are self-administered at home. Injections at randomization and weeks 1, 2 and 4 will be done at the Joslin Diabetes Center. The week 3 injection and all others starting at week 5 will be done at home.

The SUNRISE trial is randomized. Two-thirds of participants will be assigned to receive the active treatment, and one third will receive an inactive placebo. You will not know which group you are in.

Follow-up assessments will evaluate if the treatment preserves beta cell function.

Approved by
JDC/CHS

Procedures include:

- ☀ Physical exams
- ☀ Eye imaging
- ☀ Blood and urine tests
- ☀ Mixed-meal tolerance tests
- ☀ Study drug injections
- ☀ Continuous glucose monitoring (required for first year of study)

Approximate 3 year total commitment

21 total study visits

*1-year treatment
3-year total*