



A Day to Benefit
Type 1 Diabetes (T1D) Research

21st Annual JDRF Greater New England Golf Classic



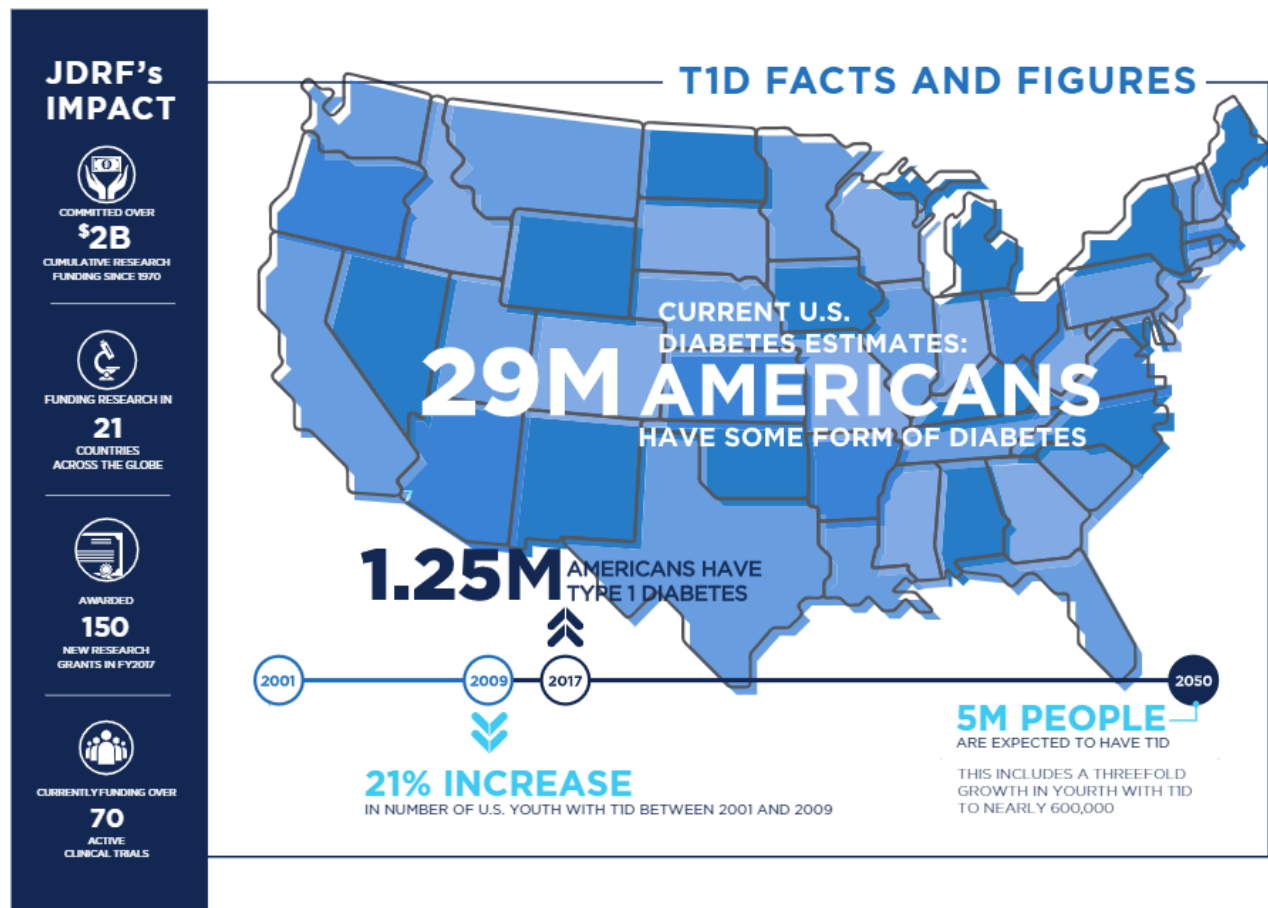
MONDAY, JULY 18, 2022
Quidnessett Country Club
North Kingstown, Rhode Island

7 a.m. Morning Flight
12 p.m. Afternoon Flight



About Type 1 Diabetes (T1D)

T1D is an autoimmune disease in which insulin-producing beta cells in the pancreas are mistakenly destroyed by the body's immune system. T1D seems to have a genetic component and can be diagnosed early in life, but also in adulthood. Its causes are not fully known, and there is currently no cure. People with T1D are dependent on injected or pumped insulin to survive.



About JDRF and Tee Up

JDRF is the leading global organization funding T1D research. Our strength lies in our exclusive focus on the worldwide effort to end T1D. Our mission is to accelerate life-changing breakthroughs to cure, prevent, and treat T1D.

The JDRF Tee Up to Cure Diabetes Golf Tournament draws approximately 200 participants each year and consists of a morning and afternoon flight, followed by dinner and an exciting silent and live auction. Proceeds from the tournament benefit JDRF-funded research efforts that will help us turn Type One into Type None.



SPONSORSHIP OPPORTUNITIES

SPONSORSHIP	Presenting \$10,000	Platinum \$7,500	Gold \$5,500	Silver \$2,500	Bronze \$1,500
Exclusive Designation as Presenting Sponsor of the Golf Tournament					
Company Name and Logo on all Marketing Materials for Tee Up					
Ability to Choose Starting Hole(s)					
Company Logo showcased on the Golf Cart Post Card					
Banner Provided by Company Displayed Prominently on Course					
Company Representative at Designated Hole					
Exclusive Signage at Designated Hole and Sponsorship Boards					
Company Information on Golfer Mailing Sent One Week Prior					
Afternoon Golf Foursome	(Two)	(Two)			
Company Logo on JDRF Website and Social Media Platforms					
Company Signage at a Designated Hole					
Recognition in Post-Event Communication					
Recognition of Sponsorship Level at Award Ceremony					
Estimated Tax Deductible Amount	\$8,800	\$6,300	\$4,900	\$1,900	\$900



UNDERWRITING SPONSORSHIP OPPORTUNITIES

All underwriting sponsors will be listed on the Golf website, Chapter Social Media platforms, and will be recognized in post event communication, in addition to the respective benefits listed below. We are also happy to discuss customizable underwriting opportunities for those who desire benefits that vary from those listed here.

Mobile Bidding Sponsor — \$2,500

Estimated Tax Deductible Amount: \$2,000

The mobile bidding platform utilized for the Silent Auction, OneCause, can be accessed directly through a smartphone. The sponsoring company's logo will appear on every OneCause user screen (approximately 200 screens)

- One (1) afternoon golf foursome
- Logo presence on mobile bidding home screens
- Opportunity to create a customized message, visible to all guests that click on the home screen (*some restrictions may apply*)

Social Media Sponsor — \$1,500

Estimated Tax Deductible Amount: \$1,500

- Logo prominently displayed at event
- Exclusive company logo promoted on all Chapter social media platforms

Snack Hole Sponsor — \$1,250

Estimated Tax Deductible Amount: \$1,250

- Company representative stationed at a snack hole on the course with branded signage
- Interact with 200+ golfers throughout two flights
- Opportunity to showcase a new product or swag

FUND A CURE

Fund A Cure is a unique opportunity to make a direct impact on the lives of people living with T1D through a **100% tax-deductible donation** in support of JDRF's mission. Donations of \$1,000 and above will be recognized the night of the tournament. Gifts may be made online through a donor-advised fund, or by sending a check to the JDRF Greater New England Chapter office.

Sponsor A Child — \$750

Estimated Tax Deductible Amount: \$750

- Opportunity to be paired with a child living with T1D.
- Company logo will be prominently displayed on the child's storyboard on the course
- Recognized during the tournament Award Ceremony

Tee Sponsor — \$125

Estimated Tax Deductible Amount: \$125

- Company name or logo placed on a 12"W x 8"H sign placed at a tee on the course
- Opportunity to purchase multiple sponsorships for increased visibility

Patron Gift Sponsor — 200 Items

- Showcase company by providing an item(s) that include company logo to be included in player gift bags distributed prior to the shot gun start
- Guaranteed to be seen by 200 players participating

We look forward to partnering with your company. For sponsorship or underwriting information, please contact: Kristen Kinney at kkinney@jdrf.org



2022 COMMITMENT FORM

CONTACT INFORMATION

Player/Company Name:

Contact Name:

Address:

Phone:

Fax:

Email:

YES I/WE WILL SUPPORT JDRF AT THE FOLLOWING LEVEL:

Sponsor

- \$10,000** Presenting Sponsor
- \$7,500** Platinum Sponsor
- \$5,500** Gold Sponsor
- \$2,500** Silver Sponsor
- \$1,500** Bronze Sponsor

Golf Entry

- A.M. Foursome \$1,000**
- A.M. Twosome \$500**
- \$65 Dinner Only**
- Fund A Cure \$ _____

Underwriting

- \$2,500** Mobile Bidding Sponsor
- \$1,500** Social Media Sponsor
- \$1,250** Snack Hole Sponsor
- \$750** Sponsor A Child
- \$125** Tee Sponsor
- 200 items** Patron Gift

- \$50** Pre-event Premium Game Package
***Package is \$65 the day of the tournament!**

Includes:

- 10 Raffle Tickets
- String
- 2 Mulligans

PAYMENT INFORMATION

- | | |
|--|--|
| <input type="checkbox"/> Enclosed is my CHECK made payable to JDRF. | <input type="checkbox"/> Please charge my CREDIT CARD in the amount of \$ _____ |
| <input type="checkbox"/> I/We wish to support at the level indicated above, but regretfully cannot attend the event. | Name on card: _____ |
| <input type="checkbox"/> Please send me an INVOICE . | Card number: _____ |
| <input type="checkbox"/> Please contact me regarding creating an underwriting opportunity. | Exp. date: _____ CVV: _____ |
| | Signature: _____ |

Thank you for your commitment. You will be sent a confirmation with additional details. Contributions beyond the fair market value of \$150 per person will be tax deductible.

JDRF Tax ID: 23-1907729

Please return this sheet via fax, email, or mail to:

JDRF Greater New England Chapter
60 Walnut Street, Suite 101B, Wellesley Hills, MA, 02481
Email: kkinney@jdrf.org
Phone: 781-431-0700 Fax: 781-431-8836