

PARENT OF  
CHILD 2-5  
YRS. WITH  
T1D?

YOU MIGHT BE  
ELIGIBLE FOR OUR  
STUDY!

REDCHIP TESTS A  
NEW APPROACH TO  
TREATING PARENT  
CONCERNS OR  
WORRIES ABOUT  
LOW BLOOD  
SUGARS.




PARTICIPATE IN  
VIDEO MEETINGS  
WITH A STUDY TEAM  
MEMBER AND OTHER  
PARENTS FOR 13  
WEEKS.

COMPENSATION FOR  
PARENTS AND TOYS  
FOR CHILDREN.

TO LEARN MORE  
call (816)960-8942  
OR SEND A

MESSAGE TO  
[endoclinicaltrials@cmh.edu](mailto:endoclinicaltrials@cmh.edu)

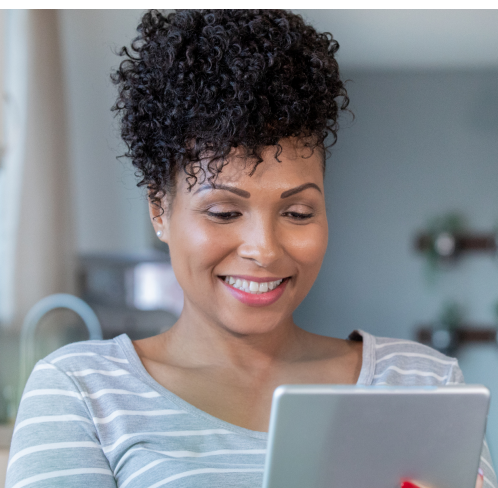




# PARENT OF CHILD 2-5 YRS. WITH T1D?

YOU MIGHT BE  
ELIGIBLE FOR OUR  
STUDY!

REDCHIP TESTS A  
NEW APPROACH TO  
TREATING PARENT  
CONCERNS OR  
WORRIES ABOUT  
LOW BLOOD  
SUGARS.



PARTICIPATE IN  
VIDEO MEETINGS  
WITH A STUDY TEAM  
MEMBER AND OTHER  
PARENTS FOR 13  
WEEKS.

COMPENSATION FOR  
PARENTS AND TOYS  
FOR CHILDREN.

TO LEARN MORE  
call (816)960-8942  
OR SEND A  
MESSAGE TO

[endoclinicaltrials@cmh.edu](mailto:endoclinicaltrials@cmh.edu)

