



JDRF One Walk Southeastern Massachusetts Saturday, October 15, 2016

The funds and support raised by JDRF One Walk—our flagship fundraising event and the largest type 1 diabetes (T1D) event in the world—help us turn Type One into Type None. Your dedication inspires us and we know that, with your support, we will reach our goal of raising more than \$36,191 at this year’s Walk! We look forward to Walk Day where we can celebrate your commitment and the strength of the T1D community.

Before The Walk

- We HIGHLY encourage all Walkers to pre-register online at walk.jdrf.org/southeasternma2016. Not only does this make Check-In go more smoothly, it allows you to get to the fun and not wait in line.
- You can mail in gifts to JDRF before the Walk at P.O. Box 609, Harrisville, RI 02830 or drop by the office at 2350 Post Road, Suite 201, Warwick, RI 02886 (we’d love to see you and thank you in person!). **Be sure to read the enclosed Walk Donation Tips Sheet.** Turning in funds earlier is another great way to ensure a speedy check-in process on Walk Day!

Walk Day Schedule

9 a.m.	Check-In Opens
9:45 a.m.	Welcome Remarks
10 a.m.	Walk Starts
11 a.m.	Light Refreshments Served and Entertainment

When You Arrive

All teams and individual walkers are to proceed to the Check-In Area upon arrival. Please see the enclosed map to get acquainted with the site. If you have a t-shirt to enter in the Most Creative Team T-Shirt Contest, please turn it in at Check-In.

- **NEW THIS YEAR—V1P Check-In:** If you have personally raised more than \$1,000, you are a V1P (Thank you! You rock!) and there will be a designated Check-In line just for you! This is our way of making Walk Day a little bit easier for our top fundraisers. You will also pick up your V1P lanyard here for exclusive access to our V1P Tent.
- **General Check-In:** If you have pre-registered online and have gifts to turn in, donations should be counted and sealed in a completed Walker Collection Envelope. An accurate total of money contained in the envelope must be clearly written on the outside of the envelope. Every walker turning in funds should turn in their own separate envelope. This helps us make sure the proper walker is credited. It is extremely important that Walker Collection Envelopes are filled out completely and accurately. Walker Collection Envelopes will be available at the Registration Tables near the Check-In Tent. **Please be sure to read the enclosed Walker Collection Envelope Instruction Sheet for more details on how to fill out your envelope.**
- **Unregistered Walkers:** We would like to collect basic information for everyone attending JDRF One Walk. If you or members of your team have not registered, please proceed to one of our Registration Tables to complete a Walker Collection Envelope. If you are turning in donations, please clearly write on the outside of the envelope the total amount enclosed and proceed to Check-In. If you have no money to turn in, please hand your completed envelope to a volunteer greeter.

- **Get a T-Shirt Ticket at Check-In:** Did you personally raise \$100 or more for JDRF? Thank you for your support! Be sure to get a t-shirt ticket at Check-In and pick up your t-shirt in the main tent t-shirt area.



Food and Refreshments

- While we provide as many refreshments as possible, thanks to our in-kind partners, **please understand that we have a limited quantity of food and beverage available and we are not able to meet all dietary needs.** We ask that you please come prepared in order to enjoy the activities of the day.

Walk Route

This year's Walk route will lead you three times around the block for a full 5K.

Activities

- **The Activities Tent is the place to be...** Stop by for games, sand art, face painting, temporary tattoos, and JDRF One Walk eye blacks. Take a photo and then post it on your favorite social media site using **#JDRFOneWalk #NewBedford**.
 - **New this year! Grab a Sharpie and complete a walk bib to let everyone know what or who motivates you to walk.**
- **Visit our New Family, JDRF Information, and Advocacy Tent** to learn more about JDRF, our research efforts, and how you can become involved locally.



- **If this is your first Walk, be sure to pick up your New Family Drawstring Backpack here.** Special thanks to Lilly Diabetes, JDRF One Walk National New Family Sponsor.
- **Bandanas for our T1D Walkers:** JDRF is motivated by the millions of children and adults challenged by T1D every single day. We celebrate your strength and the sense of hope and empowerment that Walk Day brings, and invite you to pick up a special "T1D Looks Like Me" blue bandana.
- **For our V1Ps, you and a guest are invited to the V1P Tent which will feature special giveaways and other surprises!**
- **Walk Day entertainment** will be provided by DJ Joey Flush and the New England Revolution.

Walker Collection Envelope Instructions:

- If you have Walk gifts to turn in, donations should be counted and sealed in a completed Walker Collection Envelope. An accurate total of money contained in the envelope must be clearly written on the outside of the envelope. Every Walker turning in funds should turn in their own separate envelope. It is extremely important that Walker Collection Envelopes are filled out completely and accurately.
 - Collection Envelopes will be available at the Registration Tables near the Check-In Tent.
- Please be sure to complete the following information on your Walker Collection Envelope:
 - **Complete Walker Contact Information and Team Name**
 - **Amount Enclosed**
 - **Waiver Signature**

The image shows a sample of a JDRF One Walk Collection Envelope form. The form is titled "JDRF ONE WALK™ COLLECTION ENVELOPE" and includes a sub-header "ONE ENVELOPE PER FUNDRAISER MAKE ALL CHECKS PAYABLE TO JDRF". Below the title, there is a paragraph of instructions: "If you have entered cash and check donations into your online Participant Center, please complete the Walker Donation Information Form and enclose it with your donations. The form can be found online at walk.jdrf.org or in your Participant Center. We encourage you to send contributions to the Chapter office prior to JDRF One Walk day. Thank you!".

The form is divided into several sections:

- Team Information:** Includes checkboxes for "Corporate Team", "Family Team", "School Team", and "Individual". Below this are fields for "Walk Team Name & Associated Company", "Team Captain's Name", and a list of titles: "Dr.", "Mr.", "Mrs.", "Ms.", "Miss".
- Walker Information:** Includes fields for "Walker Name", "Email Address", "Home Address", "City/Town", "State", "Zip Code", and "Home Phone".
- PLEDGE TOTAL:** Includes fields for "Cash: \$ _____", "Check: \$ _____", and "Total Amount Enclosed: \$ _____". The "Total Amount Enclosed" field is highlighted with a yellow box and labeled with an arrow "B".
- WAIVER:** Includes a signature line "Signature of Participant or Parent/Guardian" which is highlighted with a yellow box and labeled with an arrow "C".

There are three arrows labeled A, B, and C pointing to specific parts of the form:

- Arrow "A" points to the left margin of the form.
- Arrow "B" points to the "Total Amount Enclosed" field.
- Arrow "C" points to the "Signature of Participant or Parent/Guardian" line.

The JDRF logo is at the bottom right, with the tagline "FOR A WORLD WITHOUT TYPE 1 DIABETES™".

IMPORTANT: Information pertaining to cash/check Walk donations!

- Cash and checks that have not been received by JDRF prior to Walk Day but have been entered into your Participant Center will temporarily disappear from your Participant Center and fundraising piggy bank on Monday, October 17 to avoid us counting them twice.
- Immediately following the Walk we'll begin entering all money turned in on Walk Day and expect to be finished within four weeks. Once complete, the donations you turned in on Walk Day will appear on your fundraising page as confirmed donations.

Walk Donation Tips

- Encourage your donors to visit your personal or team page to make a gift online.
- Don't hold onto your Walk donations until Walk Day! Send checks or money orders—no cash, please—to JDRF at P.O. Box 609, Harrisville, RI 02830-0609.
- Download a Walker Collection Form from your Participant Center to track the gifts you are submitting.
- Write the team name and walker name on each check and/or money order you turn in. This helps ensure all Walk donations are posted to the correct team and/or walker!

- Convert your cash into a more secure check or money order before turning it in.
- Be sure checks and money orders have the donor's name and address on them.
- We are required by the IRS to send an acknowledgement letter for gifts of \$250 and above; we need the donor's address to do so. For checks under \$250, their cancelled check is their receipt.
- If the donor address is absent, the acknowledgement letter will be sent in care of the walker or team captain so you may forward it on to the donor.

Incentive Prizes and Awards

- If you raise \$250 or more you will qualify for our fundraising rewards program featuring a variety of branded JDRF items at each giving level. All qualified participants will receive a gift catalog via email within 10 weeks post-Walk.
- If you do not wish to receive a catalog, please log in to your Participant Center to opt out of the fundraising rewards program.
- Please note: Any funds submitted within four weeks after Walk Day are included in qualifying totals for individual fundraising awards. Of course, funds raised after this date will help us to increase the amount of money we are able to direct toward research that will bring us closer to a world without type 1 diabetes. Kindly note, team totals and general team donations are not applied to the incentive program.

SAVE THE DATE:
Awards Ceremony and T1D Community Event
Sunday, December 11, 2016 • 2 p.m.
Reebok World Headquarters • Canton, MA



JDRF ONE WALK SOUTHEASTERN MASSACHUSETTS DIRECTIONS AND PARKING INFORMATION

Directions

Buttonwood Park
Lake Street
New Bedford, MA 02740

Take I-195 to Route 140 South. At the first traffic light, stay straight onto Brownell Ave. Turn left onto Lieutenant Walter E. Fuller Memorial Parkway. The field we are on is on your left just past the New Bedford Senior Center.

Parking

- There is on-street parking around the site.

Walk Day Policies

In order to promote a safe and fun event designed to raise funds for JDRF and comply with the state's requirements for our use of this public space, the New England Chapter has developed the following policy.

Walk Day Team Placement

- Walk Team Tables will be awarded to the Top Five Fundraising Teams.
 - The five teams who have raised the most funds as of Wednesday, October 12 at noon will be selected for this honor. Please note: Only gifts that are accounted for in your online Walk Participant Center will be included in your fundraising total. If you have outstanding checks or cash, make sure to enter them as Unconfirmed Gifts in your Participant Center before this date. And, be sure to bring those gifts with you on Walk Day or mail them to the office.
- Team Tables are to be used as a meeting or gathering place for Walk teams.
- Team Tables can be decorated and be used to serve food to team walkers.
- Please see the enclosed site map for the location of Team Tables.
- Team Captains are responsible for turning in all donations at Check-In before they start walking.
- Team Tables will not be guarded while walkers are on the route. No items are to be left at the tables.



General Policies

Without specific approval of the New England Chapter office, JDRF walkers and other attendees of the event cannot:

- Solicit additional funds for Walk Teams through the sale of items, such as bracelets, etc.
- Distribute information from a diabetes or other corporate vendor. No independent vendors or clubs can utilize Team Tables for soliciting purposes.
- Collect names, emails or mailing information from any JDRF walkers outside of collecting funds for the Walk.
- Drive on the grounds during Walk Day.
- Make use of tents/tables that have not been designated as your team's tent/table.

If you have any questions, please contact the JDRF office at 781-431-0700 or email Lauren Shields at lshields@jdrf.org.



Walk Day Schedule

JDRF One Walk Southeastern MA

Saturday, October 15, 2016

Buttonwood Park, New Bedford, MA

- 9 a.m. Check-In Opens
- 9:45 a.m. Welcome Remarks
- 10 a.m. Walk Starts
- 11 a.m. Light Refreshments Served
Entertainment

When you arrive please proceed to the check-in area! The Walk route will take you three times around the block for a full 5K.

Elite Partners



National New Family Sponsor



Silver Sponsor



Media Partner



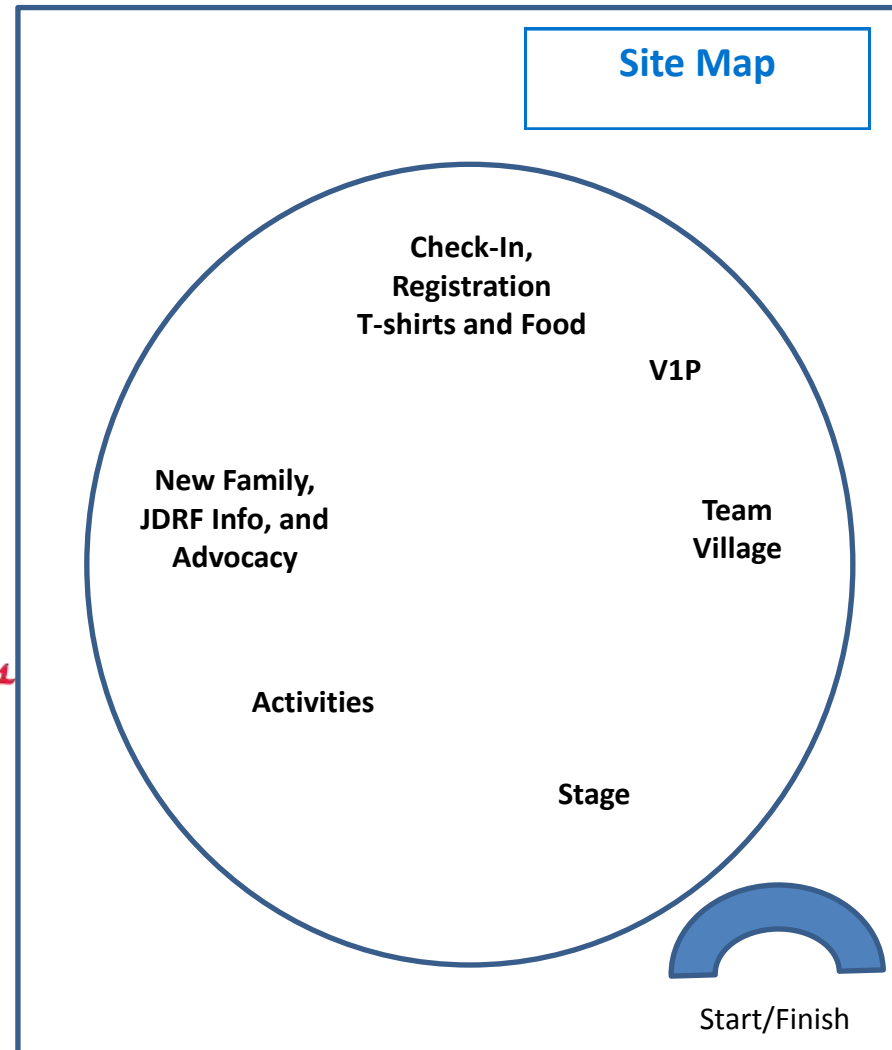
Water Stop Sponsor

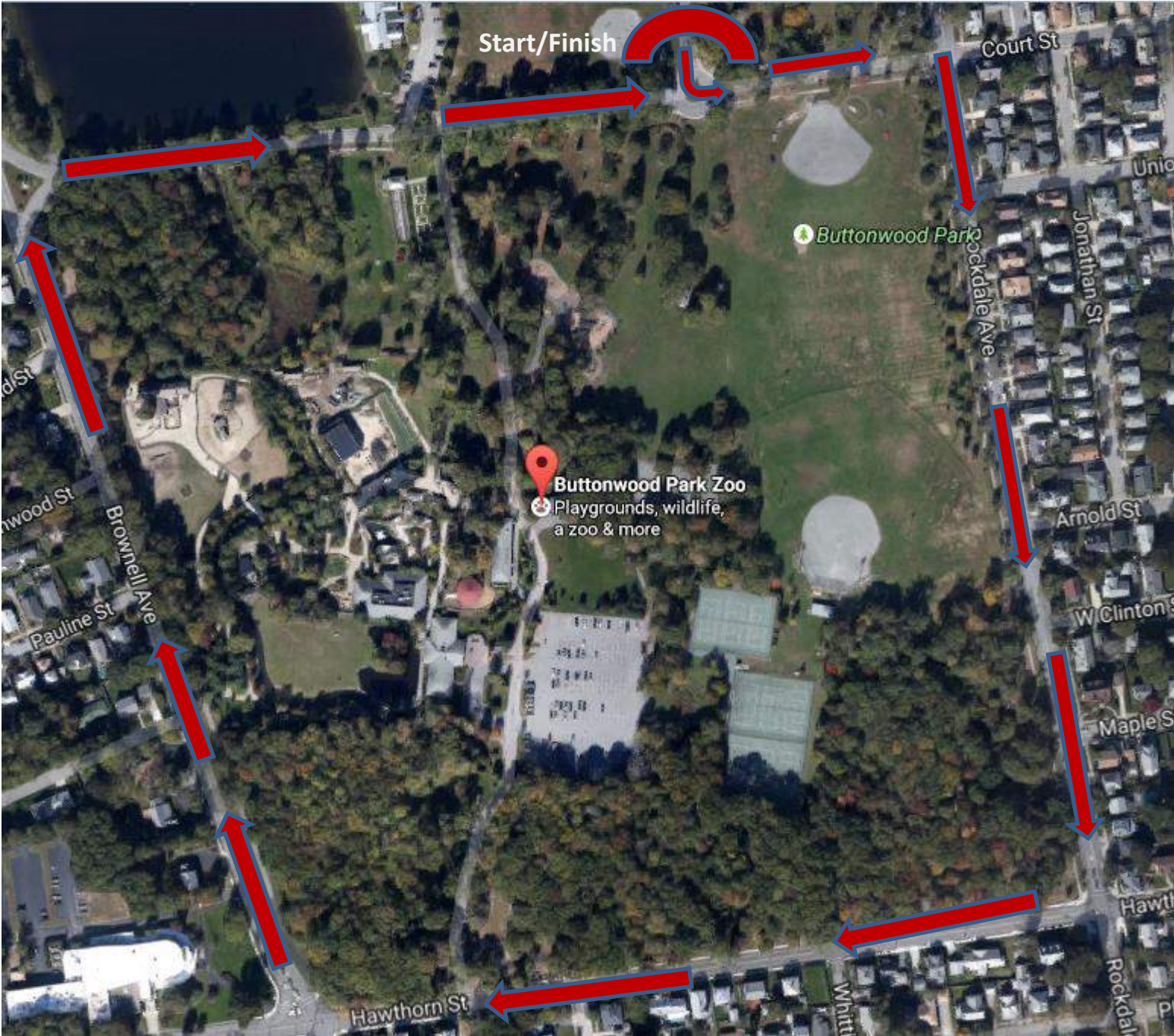


Special Thanks



Site Map





We're the *make things happen* type

...and you play the most important part!

Thanks to your continued support, JDRF is the most influential private funder of type 1 diabetes (T1D) research in the world and has invested more than \$2 billion in T1D research funding. Our impact includes:

- Sponsoring scientific research in 18 countries around the world.
- Currently funding 50 human clinical trials of potential T1D therapies.
- Advocating and securing \$150 million annually in federal funding for the Special Diabetes Program.
- Leveraging an additional \$2.2 billion in T1D funding from governments, foundations, industry, and academic labs through our spending.

To learn more about the impact your efforts are making on T1D research, visit www.jdrf.org/research.



Together, we can walk to the finish...and turn Type One into Type None.