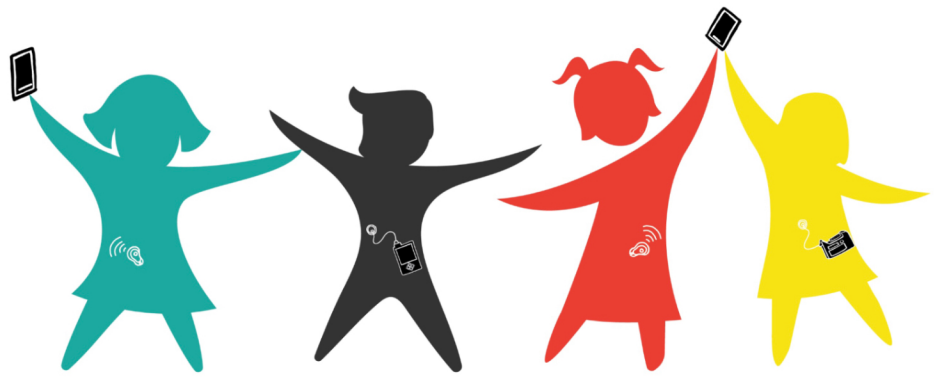


CamAPS FX

USABILITY TESTING STUDY



WHAT IS THIS STUDY ABOUT?

Cambridge University is looking for feedback on their closed-loop app user interface through a study in collaboration with Jaeb Center for Health Research.

Compensation will be available

WHO CAN JOIN?

- Caregiver of a child 9 years of age or younger with Type 1 Diabetes
- Adolescents 10 to 17 years of age with Type 1 Diabetes
- Child and adolescent must be current Dexcom G6 CGM users

REQUIREMENTS

- Be able to read and speak English
- Have adequate vision to see the mobile phone display
- Willing to complete online training on a closed loop system
- Willing to complete assessment remotely via video conferencing

LEARN MORE BY VISITING

<https://studies.jaeb.org/ndocs/camapsfx/Participant/ProtocolCamAPSFx/PtLandingPage/PtLandingPage.aspx>

