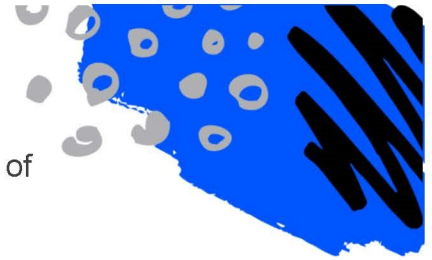


# Fundraising Online

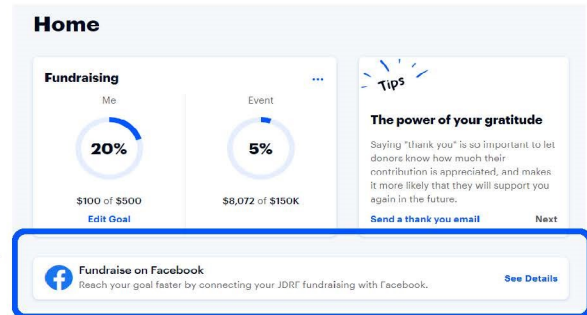


Now that fundraising has moved mostly online, it's time to start thinking of some fun, new ideas to raise money for innovative T1D research!

## Connect Your Participant Center to Facebook

### Step 1

From your Participant Center dashboard, Look for the “Fundraise With Facebook Section” and click “See Details” below your fundraising progress.



### Step 2

A “Create a Facebook” Fundraiser” window will pop up on your screen. Click the, “Connect to Facebook” Button and sign into your Facebook account. If you are already signed into Facebook, you will not have to sign in again.

Once the accounts have connected, it will notify you in the bottom left corner of your window and the box will disappear from your participant center.



### Step 3

Check out the Facebook Fundraiser you just created! All donations received on your Facebook Fundraiser will automatically show up on your JDRF One Walk participant page .

- If you haven't already customized your page, you can do so in the “My Page” tab in your participant center. Then copy your story, scroll down to “...More” button on your Facebook Fundraiser page and click the “edit fundraiser” button.
- If you have customized your page, your Facebook Fundraiser will automatically copy that information.

